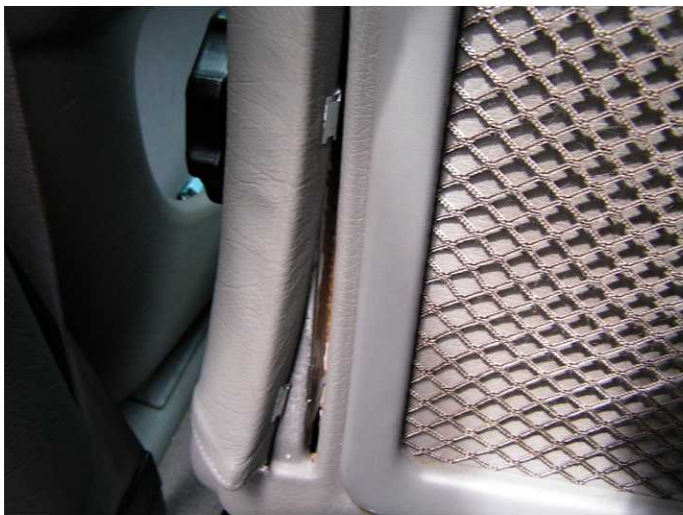
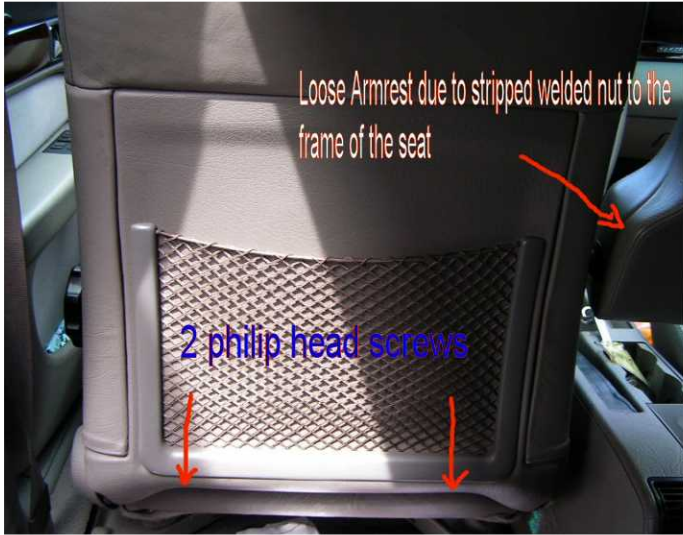


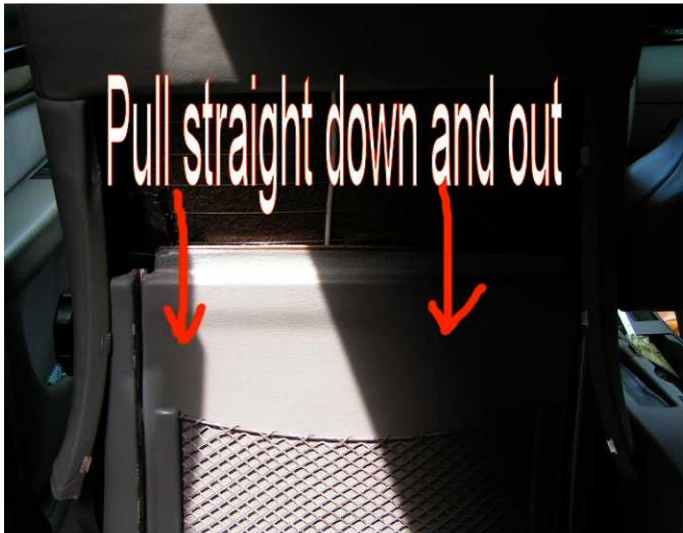
1996 Audi A6 Wagon Armrest Fix

The armrest on the A6 is connected to the seat frame by a long bolt and a nut welded at the frame, when someone rest on the armrest too hard, this welded nut stripped, broke off the frame, the armrest is dangling and being loose and annoying. This is one way to fix it. I couldn't find the teathed locking 8mm nut, so I have to use the locking washer in place of this setup.



To remove the dangling armrest to replace the nut & locking washer:







6mm Allen wrench

14mm for old nut



To put back the back panel, just do it in reverse order.

To remove the head rest if you need:

